



ZUBERI FLOORING
natures design

C O R P O R A T E P O R T F O L I O

2 0 2 4

www.zuberiflooring.co.za

Table of Contents

Portfolio Contents

05	About Us	How we began
06	Our Philosophy	What we stand for
08	Sustainable Forestry	Maintaining our Resource
11	Manufacturing Process	How we build it
13	Giving Back	Our Community



Our Projects	14
Finished installs	
Our Products	18
See What we do	
Our Installation	22
What makes us different	
Customer Feedback	24
What our clients say	
Contact Us	25
Give us a shout	



ZUBERI FLOORING
natures design

Welcome **Message**

MICHAEL & LLOYD DILLON

Brothers & Directors

We are delighted to welcome you to our realm, where our expertise in hardwood flooring transforms your vision into stunning spaces that reflect your unique style and sophistication.





Everything is
designed. **Few
things are
designed well.**

BRIAN REED



About Us

From Forest to Floor

As a family-run business, for more than half a century, we have been in the hardwood timber industry. For three decades, our family has crafted some of the world's finest hardwood flooring and decking, consisting of multiple timber species.

In 2003, 4th generation brothers Michael and Lloyd Dillon opened the South African retail branch of the business and have been organically growing it ever since through hard work, dedication, delivering on promise, quality service, and unmatched craftsmanship.

In 2021, shortly after Covid, we gave the entire business a massive overhaul. With a new 6000 square meter state-of-the-art facility, we now produce the world's finest engineered flooring, featuring a Teak central core layer offering ultimate stability and resistance against mould and rot.

With sustainability at heart, our entire central core is made from small branch wood that would normally be uneconomical to harvest due to its small size. Our sawdust from all stages of our process is pressed into briquettes which power some of our machinery and all our kilns.

Since 2003, we have controlled our entire supply chain from forest to final installation in our clients' homes. Our installations fall under our Zuberi product offering, ensuring clients are never linked to subcontractors and enabling us to take responsibility for the entire process.





Our Philosophy

Excellence without compromise

1. Sustainable harvesting

Our hardwood flooring is sourced from our protected family concessions. Through responsible stewardship, our forests have grown denser since our founding in 1962, ensuring a sustainable supply of high-quality materials for generations to come

2. Manufacturing

Our manufacturing process upholds the highest standards, combining advanced technology with skilled craftsmanship. This dedication ensures that every plank of hardwood flooring meets our rigorous quality criteria.



3. Innovation

Innovation drives our wooden floor manufacturing. We pioneer cutting-edge techniques for intricate shapes and blend diverse mediums seamlessly into our products. Through exploration and collaboration, we enhance aesthetic appeal and functionality, exceeding customer expectations with unique, customizable solutions. Research and development keep us at the forefront, delivering exceptional quality and craftsmanship that elevate spaces.

4. Expert Installation

Our in-house installation teams bring extensive experience and attention to detail to every project. They ensure our hardwood flooring is installed flawlessly, enhancing the beauty and functionality of each space.

WELCOME HOME!





Sustainable Forestry

Maintaining our Resource

Within Zuberi Flooring, we uphold our commitment to sustainability and environmental consciousness. Safeguarding our forests and fostering their continual prosperity are of utmost importance to us.

Stringent protocols and protective measures govern our tree harvesting practices. Only trees meeting specific criteria measuring between 350mm and 700mm diameter are harvested. Trees above 700mm are monument trees and are protected indefinitely. Seed bearing trees are also protected. Our operations adhere to precise regulations dictating the permissible number of trees to be felled per hectare, ensuring that the forest's density endures post-harvest. Due to these practices, we harvest less than 1% of the total forest. Our forests are denser now, than they were when our operations began in 1962.

Our royalty payments from harvested timber fund a forestry initiative that includes anti-poaching measures, fire protection, and mitigation of human encroachment. Surrounding our protected forests are 2 million people who rely on livestock farming. Controlled harvesting activities are essential to prevent unchecked human encroachment and ensure the preservation of these vital forests for future generations.

Each year, we propagate 5,000 seedling trees in our nursery which are planted into the local communities surrounding our forests to replace trees that have been cut down for firewood and building activities.

In addition to regulatory compliance, we employ an innovative method to nurture future forest growth. Annually, we distribute 200,000 seed balls, comprising tree seeds encased in clay and ash, across designated areas. These meticulously crafted balls, produced by the local community in exchange for compensation, serve as a catalyst for sapling proliferation. This initiative not only fortifies the future of our forests but also empowers local communities.

Utilizing drone technology and ground scouts, we've launched the Fallen Tree Range. This innovative product sources semi-petrified hardwood from trees felled by natural elements like lightning, fire, and elephants. Perfect for interior applications, these logs would otherwise go to waste. Processed in our new engineered flooring factory, we transform them into veneers, each telling a unique story through its natural character.

Branch wood from these trees forms the central core of our flooring boards, aligning with our Zero Wastage policy. Due to its scarcity, there's currently a waiting list for orders, as we produce approximately 1200 square meters per year.

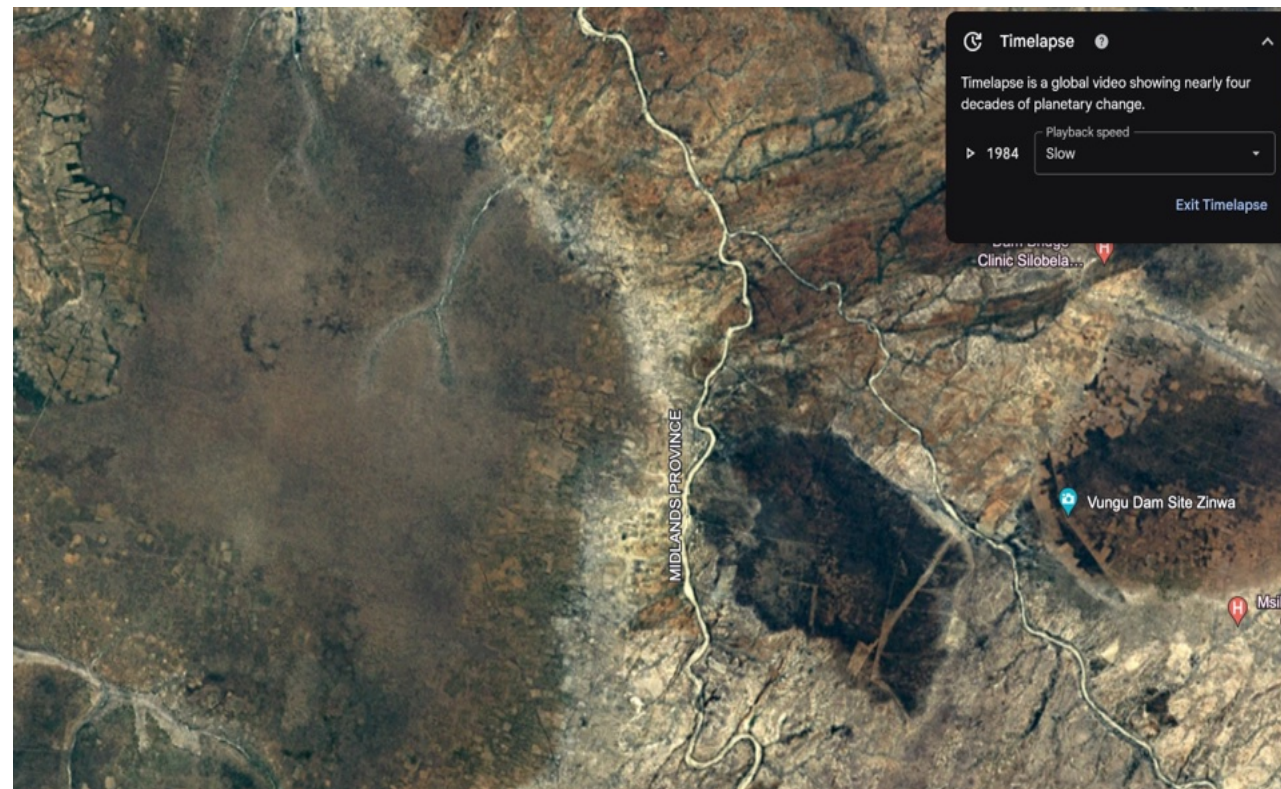
Additionally, all sawdust across our operations is compacted into briquettes, powering our machines and drying kilns sustainably.



Above Left: Seedballs being rolled at our Nkayi Basecamp.

Above Right: A fallen Leadwood tree most likely from Elephants.

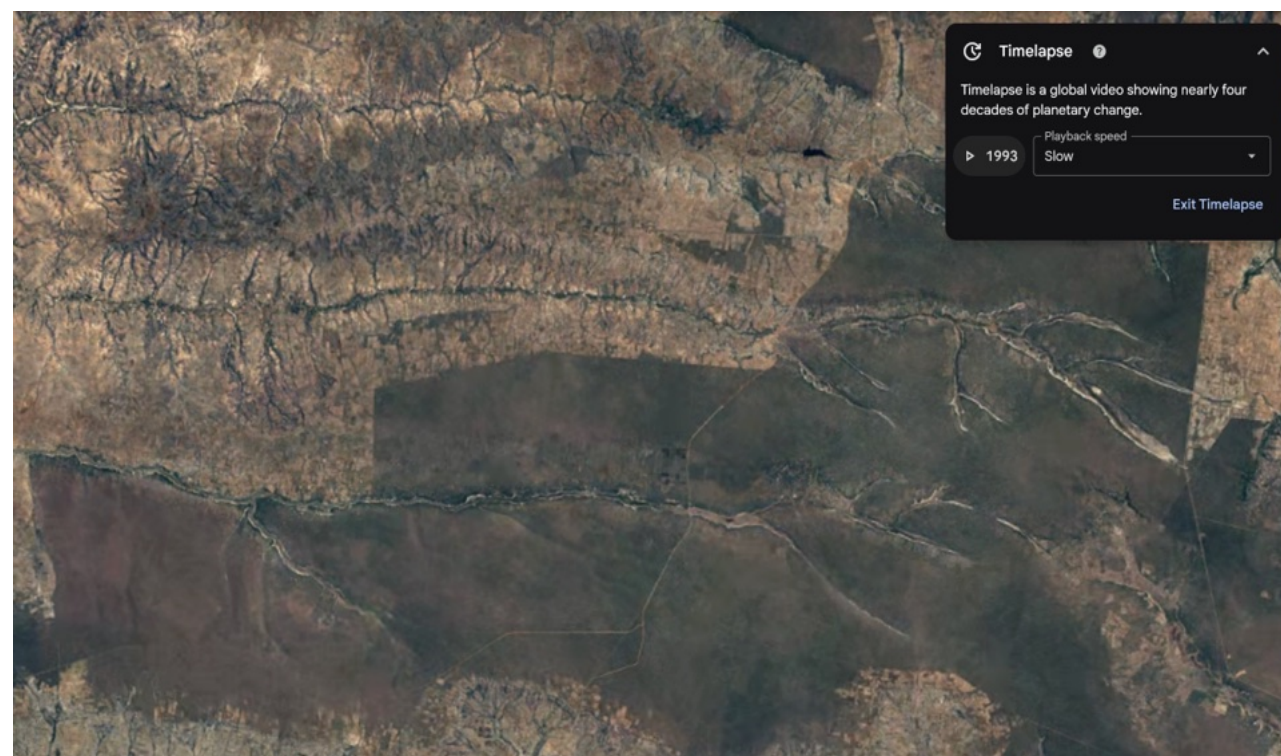
Left: Our fallen tree range stock entering the veneering process. Notice the excellent integrity of the timber



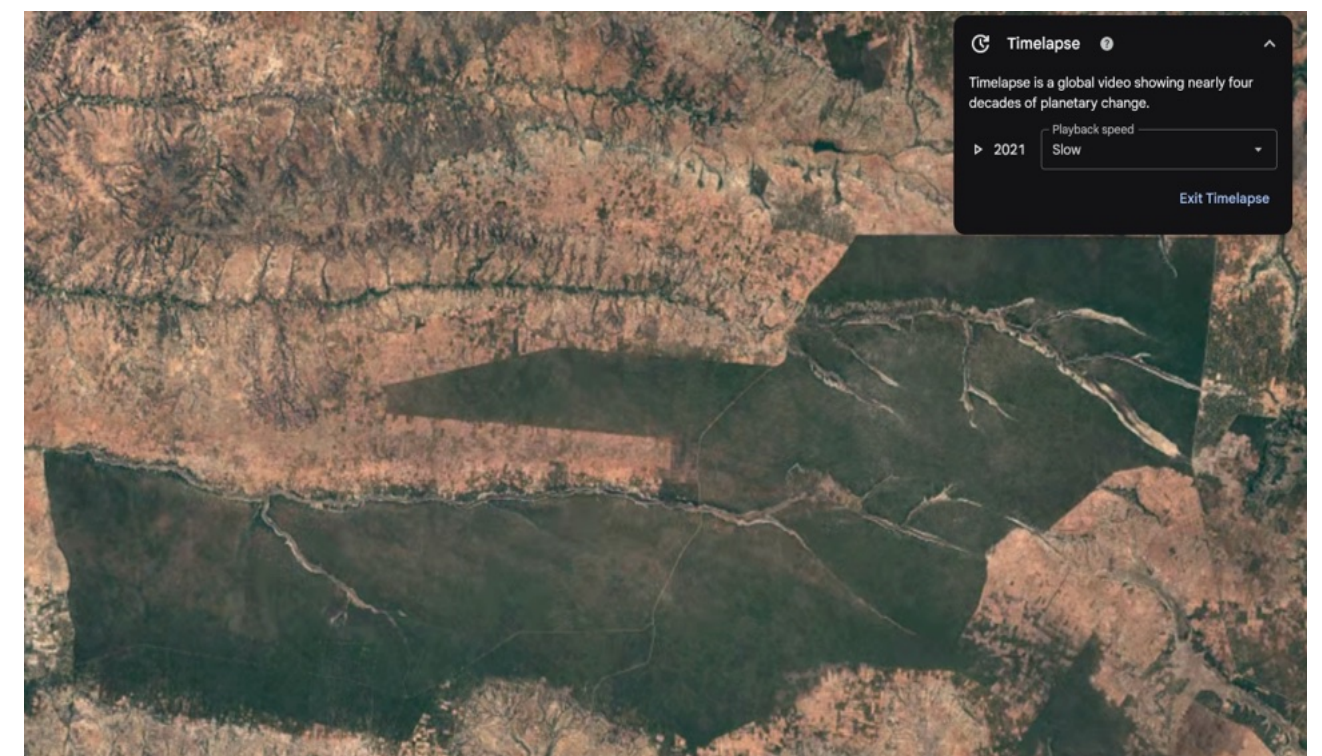
Above:
Forest Block 1984, when we first took control of this concession



Above:
Forest Block 2021. Notice the density increase in the forest, and the importance of forestry from keeping human-encroachment at bay



Above:
Northern Block 1993, before we took control of this concession



Above:
Northern Block 2021. Notice the density increase in the forest. A section of 8000ha was lost on the Northern side of the river, and the Northern boundary due to human-encroachment.

Manufacturing Process

How we build it

All our timber is carefully harvested into wide and long veneer stock. Even small branch-wood pieces, as narrow as 30mm in diameter, are utilized for our central core stock. These squared planks are initially processed at one of our sawmill bases and then transported to our processing plant in Harare.

The timber is meticulously pin stacked and placed into our drying kilns, which are powered by sawdust briquettes. This drying process typically lasts between 14 to 18 days, resulting in timber with a moisture content of 8% to 10%.

Next, the veneer stock is sent to our veneer plant where it is saw-cut into 4.5mm veneers. This method allows us to extract five times more flooring from the timber compared to non-engineered flooring.

Meanwhile, the small branch-wood stock goes to our Bare-core line for multi-ripping into small fingers, ensuring every part of the resource is utilized. These small fingers, sized at 12 x 20mm, are pressed into central core boards in a dedicated press line.

As the process progresses, calibrated veneers and central cores are fed through double glue rollers and pressed together with timber grain running in opposing directions, ensuring our boards achieve ultimate stability with solid hardwood throughout.



After 24 hours of curing, the pressed boards undergo re-calibration through a sanding line and then move to our profiling line where they receive tongue and groove fittings and are cut to their final dimensions.

Boards then proceed to our finishing section where they undergo colouring and finishing based on client specifications. Once completed, the finished flooring boards are boxed, palletized, and prepared for shipping.



Giving Back

Our Community

The Bee Project

The Bee Project reflects our deep commitment to preserving and supporting the thriving bee populations in our Nkayi Mill and surrounding forests. At its heart, our initiative focuses on strategically placing bee hives. These hives serve as havens for bees and crucial elements in maintaining the ecological balance of the area. By nurturing these bee populations, we aim to protect the biodiversity of our local environment. Our project goes beyond simply installing hives; it embodies a comprehensive dedication to conservation. The local community enthusiastically tends to the hives and harvests the honey. We purchase this honey from the community, thereby generating additional income and fostering economic opportunities within our communities.

The Tree Project

Zuberi Flooring and [Pride of Africa](#) have joined forces to inspire and educate the youth about environmental protection. This collaborative project focuses on planting fruit and shade trees in local schools and public areas across Zimbabwe. Moreover, it aims to raise awareness among young people about the significance of environmental sustainability.

This initiative goes beyond mere tree planting; it is a multifaceted endeavour aimed at empowering youth with knowledge. It seeks to cultivate a profound respect for the environment and equip them with the skills to become environmental stewards. Through engaging educational programs, workshops, and interactive sessions, Zuberi and Pride of Africa aim to provide the younger generation with a comprehensive understanding of the intricate relationship between human activities and the well-being of our planet.

Nkayi Orphanage

The Nkayi Orphanage holds a special place in the hearts of Zuberi employees. Sadly, the children residing there have lost their parents to HIV, but they are cared for and cherished by dedicated caregivers.

Funding for the orphanage is sustained through the sale of firewood from our Harare factory, with 100% of the profits dedicated to their well-being. Additionally, the Muslim community's generosity has provided each child with their own bicycle, soccer ball, and pair of Croc shoes.

Zuberi is committed to ensuring that every child receives an education and has implemented a program guaranteeing job opportunities at our timber mill for orphanage graduates. This initiative underscores our dedication to supporting the children's holistic development and future prospects.



Our Projects



Above: In this special project, our engineered oak integrates seamlessly with prestigious global brands and Natural stone. Installed onto ceilings, floors, stairs, and walls, it harmonized beautifully with the natural stone. For areas with stone flooring, our oak was applied to ceilings, enhancing the spatial warmth.



Above: A luxury car garage at this Westcliff home, although modern it blended into the landscape beautifully with our hardwood vertical screening, stone cladding from the site, and our hardwood decking.



Above: A stunning house on a Pecan farm, installed with our hardwood decking (stained black), and hardwood timber sliders to provide some respite from the harsh African sun.



Above: An architecturally perfect spiral staircase, with a circular skylight above, created an incredibly welcoming feeling in our clients entrance foyer.

Our Products

Flooring & Decking



Hardwood Flooring:

We offer hardwood flooring in a multitude of different widths, patterns, grades and timber species. All our products are manufactured in our own factory and installed with our own teams.



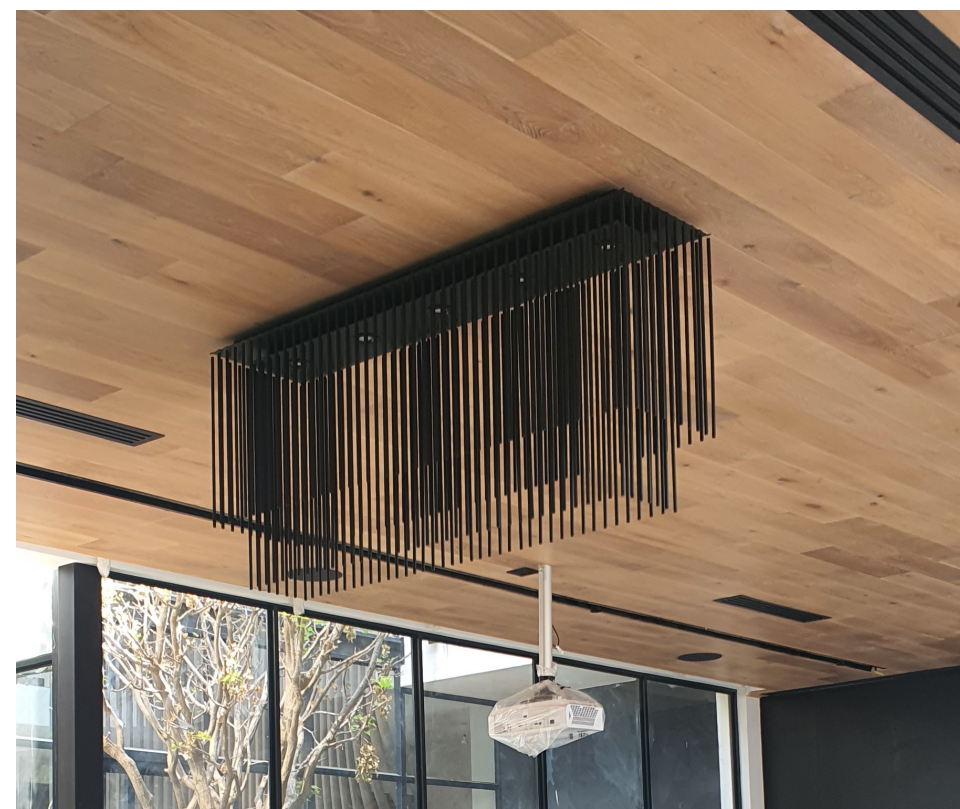
Hardwood Decking:

We offer hardwood decking in three different timber species, all of which are class 1 hardwoods. All decks are installed by our own teams.

Custom-Tailored Products



Above: Customized Stair-cases



Top: Interior Cladding
Bottom: Ceilings



Top: Hardwood trusses
Bottom: External cladding

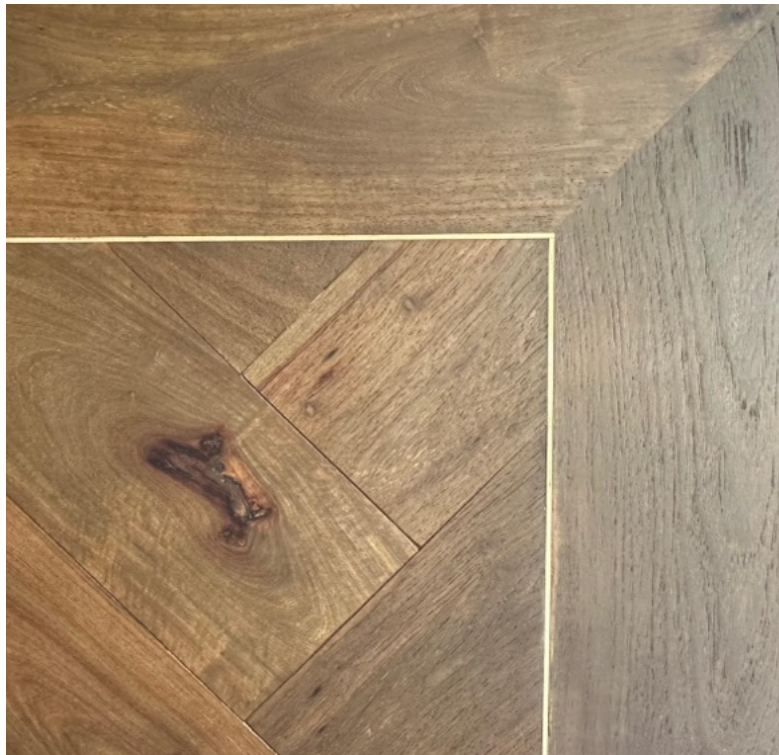
Niche Product Offerings



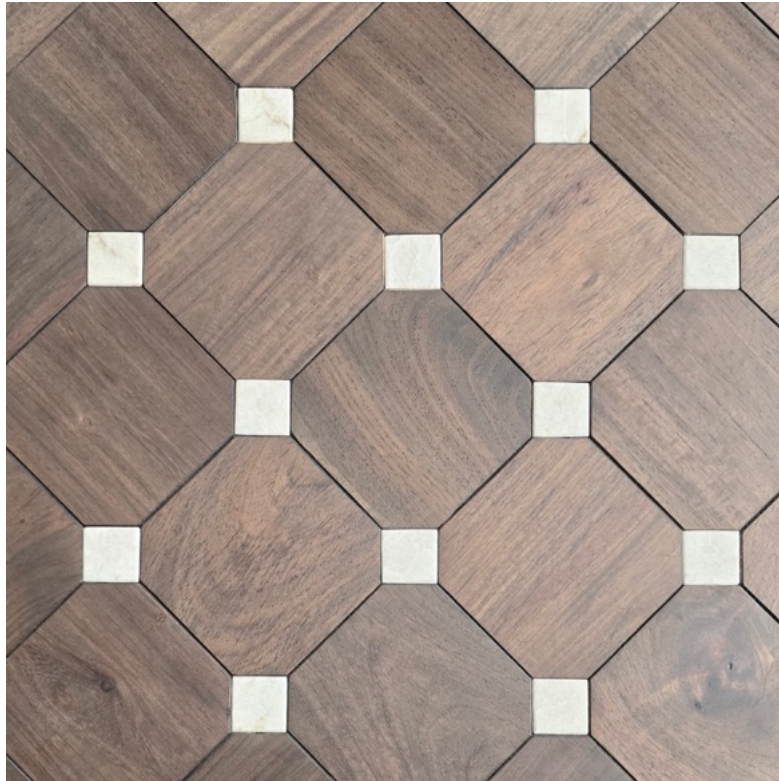
Top: Interior cladded ceilings
Bottom: External pergola

Above center & Right: Hardwood external sliding screens
Bottom: Hardwood vertical fixed screens

Bespoke Product Offerings



Top: Brass inlays
Bottom: Walnut and marble cobble (scalable in size)



Above: Walnut & Oak cobble (scalable in size)



Top: Mini Bow-tie (scalable in size)
Bottom: Oak Bubble-bone (scalable in size)

Our Installation

What makes us different

The Products we use

Our installation is a distinctive aspect that distinguishes us. We not only oversee the entire process under our Zuberi brand but also utilize our own products throughout. From moisture barriers and glue to oils, stains, and LED UV sealers, everything is in-house. We supply these products to the trade industry while employing them in our operations. This approach ensures accountability at every stage, eliminating any ambiguity or division of responsibility between timber suppliers, product providers, and installers. We control the entire chain seamlessly, from forest to floor.

Our skilled staff

At our company, we have a dedicated workforce of over 500 individuals. Here's the breakdown: 220 employees work in our forestry division, 200 are based at our flooring factory, and 50 are part of our retail supply and installation team. Many of these loyal staff members have been with us from the beginning, contributing their expertise and commitment to serving our market.

Our detailing

We take pride in our efficiency and craftsmanship on site. Over the past 20 years, we've meticulously refined our techniques to keep pace with evolving design trends. Whether it's blending tiles and timber, aluminum and timber, or different stair details, we offer a wide array of options to meet any design specifications. Our long standing relationships with our staff guarantee that every detail discussed with the client is expertly executed on site.

Our commitment

Client satisfaction is our utmost priority in this industry. When challenges arise, we promptly address and resolve them. With over 20 years of serving the South African retail market, every client matter is crucial to us—we stand by our installations as a service. No issue is left unresolved; we are committed to achieving a positive outcome for every client, ensuring their happiness with our work. This dedication is why we handle our installations internally, maintaining a reputation free of negative online reviews—we consistently prioritize a positive client experience.





Our Collaborations

Working closely with design teams

We have a strong collaboration with interior designers, architects, quantity surveyors, and joinery companies, tailoring our products to perfectly suit each project's specifications from the outset. This ensures there's no last-minute scramble for colour matching; every detail is meticulously planned and confirmed early on. Working closely with quantity surveyors enables us to create custom solutions that not only meet but also respect the project's budget.

At our showroom, we maintain a comprehensive collection of paint, fabric, stone, and tile samples, allowing us to swiftly create beautiful mood boards in-house. This capability gives us the flexibility to present cohesive design concepts that align seamlessly with our clients' visions and requirements.



Customer Feedback

What our clients say

We chose Zuberi Flooring to replace our deteriorating pool deck. Their skilled sales team, led by a director, assessed our deck and recommended reusing the frame with a new teak finish, making the cost competitive. Off-site manufacturing met promised timelines, and installation took just four days by a highly competent, courteous, and professional team. The final teak deck around the pool and garden edges is beautifully finished. I highly recommend Zuberi Flooring.

Mike Marshall

Lloyd and Michael Dillon undertook extensive renovation work on the wooden floors and decking across our three lodges at Imbali Safari Lodges. Despite facing tight deadlines and unexpected challenges, such as reshaping room decks for plunge pools at Imbali, they demonstrated unwavering professionalism and determination. Over the allocated two weeks for Imbali Safari Lodge, Hamiltons Tented Camp, and Hoyo-Hoyo Tsonga Lodge, they worked tirelessly around the clock to complete 2600 square meters of new decking and refurbish 800 square meters of flooring with a team of 42 installers. Their honest advice and proactive approach to problem-solving were instrumental. They prioritized building enduring partnerships over mere transactional work. I confidently recommend them and am happy to provide further information if needed.

Arno Du Preez

Michael and his team completed my entire home in 2023. Herringbone as well as straight lay designs. It was exceptionally well done. His team are professional and efficient. The outcome was beautiful and after a year of use it still looks new. We will work with Zuberi anytime.

Ahmad Navlakhi

Michael and his team at Zuberi Flooring is the only flooring company that I can recommend without a moment of hesitation. Their product is world class, but more importantly the installation and after care service is impeccable. Dream Floors and decking, and a dreamteam.

Joe Van Rooyen

Contact Us



Contact Us

Johannesburg: 011 805 1717

Cape Town : 021 418 0803

Nelspruit: 013 752 2918



Website | Instagram



www.zuberiflooring.co.za



[@zuberiflooring](https://www.instagram.com/zuberiflooring)



Showroom Addresses

Johannesburg: 3 Desmond road, Kramerville, 2090

Cape town: 6 Rose Street, Cape Town City Centre, 8001



ZUBERI FLOORING
natures design

